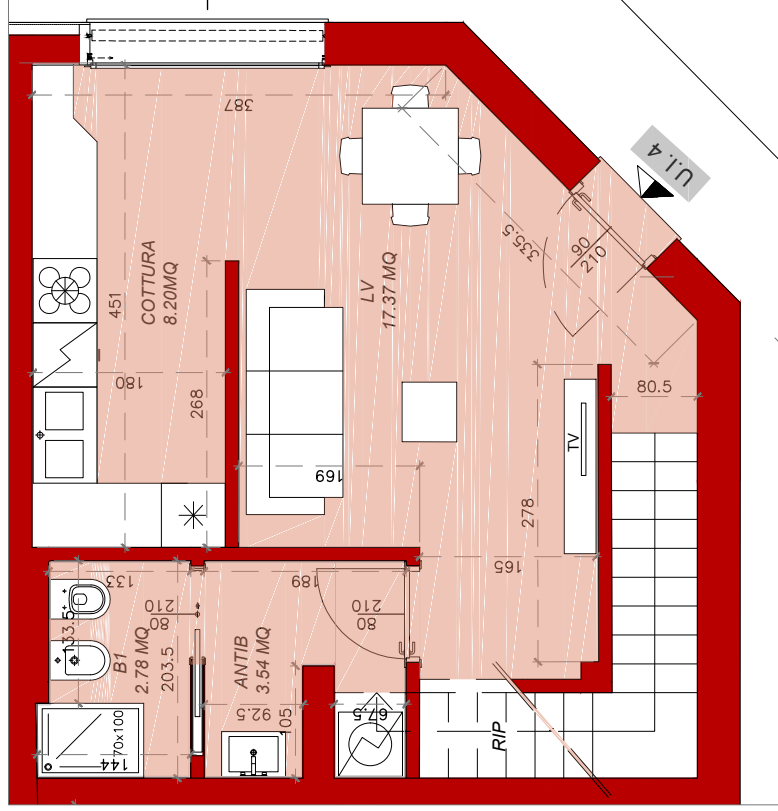


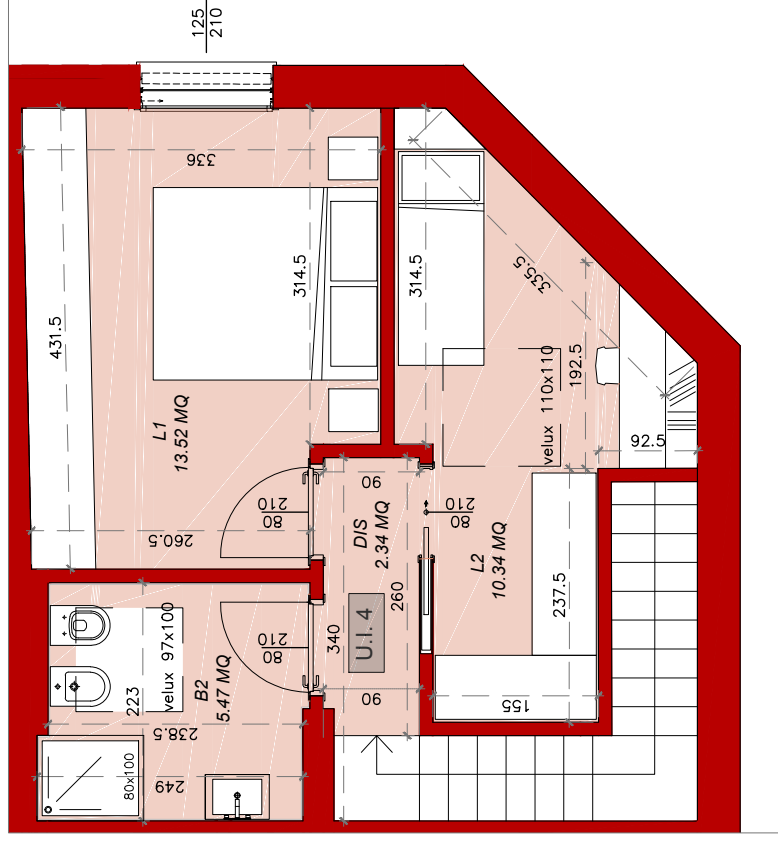
# edificio B

# U.I. 04

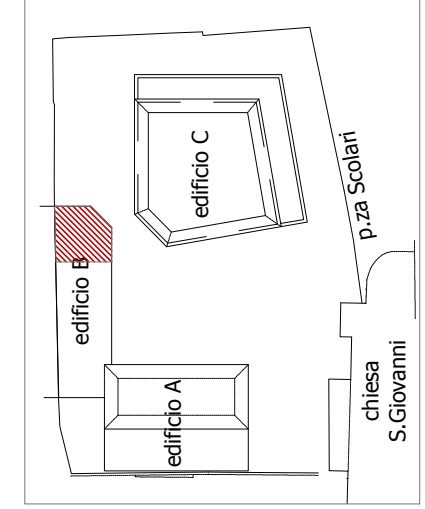
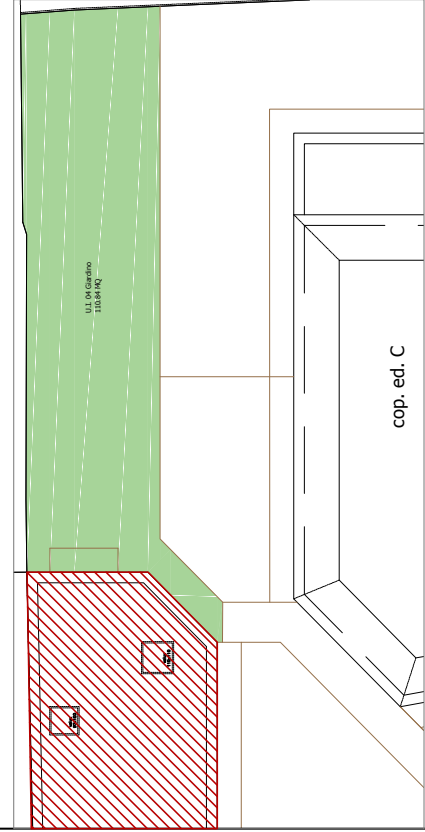
APPARTAMENTO	GIARDINO/TERRAZZO
Superficie Commerciale	
80.13 mq	110.84 mq



Piano Terra



Piano Primo



BORGO ANTICO Srl - via F. Gortini, 43 Trenno Milano

14/06/2019

APPARTAMENTO: **U.I. 04** SIGG.....

nb. quote e superfici indicate nella presente planimetria potranno subire variazioni in sede di approvazioni comunali e progettazione esecutiva

Planimetria scala 1:50\_Piano Terra e Primo